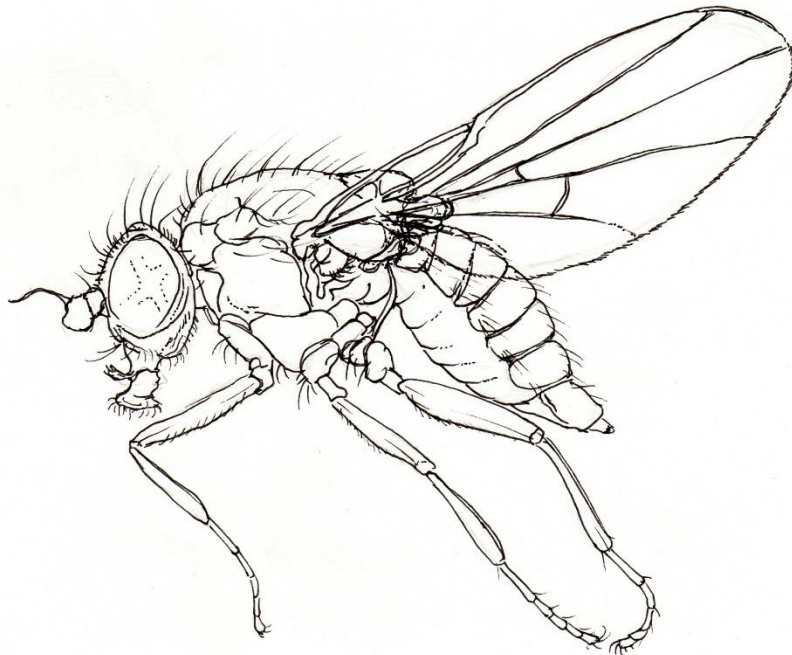


**A provisional review of the status
of Agromyzidae in Great Britain & Northern Ireland**

National Agromyzidae Recording Scheme Report No. NARS01

Barry P. Warrington

November 2022



Typical Agromyzid in lateral view
A. Jackson [after Sasakawa]

National Agromyzidae Recording Scheme
<https://agromyzidae.myspecies.info>

Warrington, B. P. 2022. A provisional review of the status of Agromyzidae in Great Britain & Northern Ireland. National Agromyzidae Recording Scheme. (National Agromyzidae Recording Scheme Report No. NARS01).

Contents

Introduction	1
Methodology	1
Under-recording	1
Criteria	3
Agromyzidae species statuses	4
Acknowledgements	12
References	13

Introduction

This is the first provisional review of the status of all Agromyzidae species in Great Britain & Northern Ireland. The family was very briefly assessed by Falk *et al* (2016) but only two species [which were also assessed by Shirt 1987 and Falk 1991], *Phytoliriomyza ornata* (Meigen, 1830) and *Phytomyza orobanchia* Kaltenbach, 1864, were awarded conservation status owing to a lack of workers and access to records.

The National Agromyzidae Recording Scheme was launched in December 2016, the same time as Falk *et al* provisional assessment of Acalyptratae flies was published. During the past six years, the National Agromyzidae Recording Scheme has collated and verified over 58k historic and current records, which form the basis of this provisional review.

Falk *et al* cited 395 species of Agromyzidae were known from the UK, this figure now stands at 424. There are doubts regarding some species on the British checklist as unfortunately, it has not been possible to confirm the authenticity of their addition to the British list.

Information covering distribution, ecology and potential threats is not included. If researchers require further information for a particular genus or species, please contact the author.

Methodology

All statuses are based on records held within the dataset of the National Agromyzidae Recording Scheme, which at the time of writing, contains 58,060 records. Due to the difficulty in identifying Agromyzidae [particularly adults] and enhanced knowledge, it is likely that some historic records will be erroneous; however, any records which are considered doubtful have been omitted.

Data was also obtained via the recently digitised British & Irish Agromyzidae collection held at Natural History Museum, London (Crowther *et al* 2019). This dataset was utilised to obtain the last known record for species which may be considered to be extinct in Great Britain. Although the whole dataset is not incorporated into this review, initial examination of the species [and quantity of specimens/records] indicates that it would have little bearing on the statuses applied.

This review is not a Red Data Book and all RDB statuses are provisional [p].

Under-recording

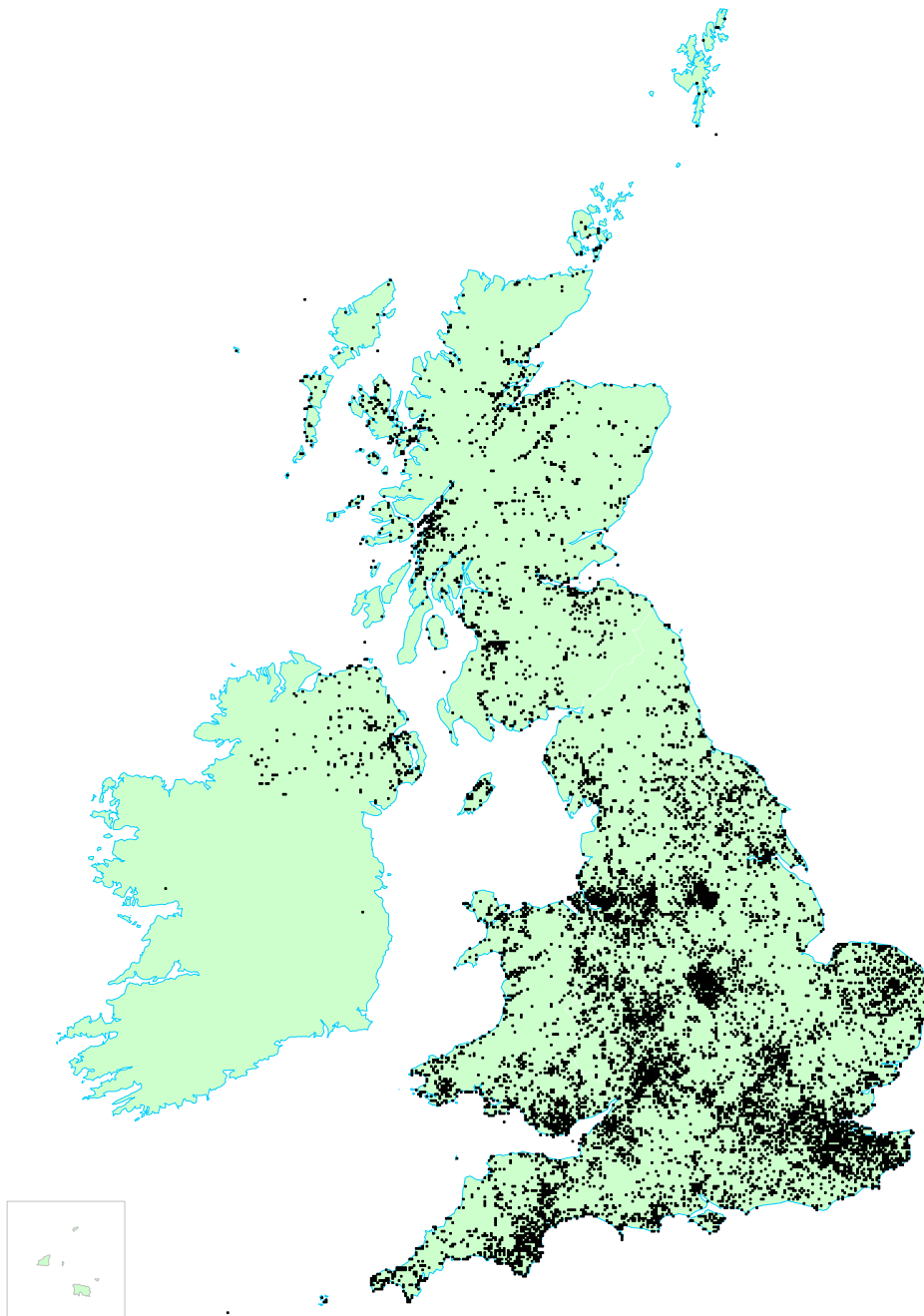
Although recording of the Agromyzidae larval stages has seen a distinct rise in popularity in recent times, there is no doubt that many species and genera are less well recorded than others. This is chiefly due to the difficulty in observing the larval feeding habits of some genera including *Hexomyza* [gall-causing], *Melanagromyza* [stem-boring], *Ophiomyia* [stem-mining] and *Phytobia* [cambium feeders].

There are still very few workers who collect adult material but as the vast majority of species can be readily identified based on larval habits and host plant, whether data relates to adult or larval material is irrelevant as both are indicative of presence. It would be impossible to ascertain how much more one species is under-recorded than another, therefore, under-recording is not incorporated within this review.

As the National Recording Scheme receives, on average, over 2k records per year, this will inevitably over time result in changes to the given species statuses within this review, therefore, reviews and updates will occur on a regular basis.

The map below shows the coverage of records within the dataset used to produce this provisional status review. Although there are parts of the UK which are lacking in data, the overall coverage is considered to be at an acceptable level to form the basis of this review.

Dataset coverage



Criteria

This review uses the 'old' IUCN British rarity criteria as the recently developed international criteria for Red Data Book species is considered by many to be unsuitable for invertebrates. The 'old' criteria are summarised as follows;

Extinct	Species where no post-1980 record exists. No record(s) may be due to the lack of workers, difficult to observe larval habits/collecting of adults or a genuine extinction. Some species may be rediscovered but for the purpose of this review, any species which has not been recorded within the past 40 years is considered to have become extinct in Great Britain & NI
pRDB 1	Occurs in or less than 5 10km squares
pRDB 2	Occurs in 6 – 10 10km squares
pRDB 3	Occurs in 11 – 15 10km squares
Nationally Scarce A	Occurs in 16 – 30 10km squares
Nationally Scarce B	Occurs in 31 – 100 10km squares

Additional categories used within this review;

Local	Occurs in 101 – 300 10km squares
Common	Occurs in more than 300 10km squares
Adventive	Occurs only as a result of deliberate or accidental importation
Doubtfully British	Species which are included on the British list but are considered doubtful owing to no published record or specimen
Unknown	Species which are recent [post 2010] additions to the British list whose distribution has not yet been ascertained

Species which occur on non-native host plants, chiefly the glasshouse *Liriomyza* spp., are also included within the review as it is deemed appropriate to cover all species on the British list.

Agromyzidae species statuses

Species are listed in alphabetical order, as opposed to taxonomic position, to allow particular species to be located easier.

Species	Proposed status	Former status per Falk <i>et al</i> (2016)
<i>Agromyza abdita</i>	Unknown	
<i>Agromyza abiens</i>	Nationally Scarce B	
<i>Agromyza albipennis</i>	Nationally Scarce B	
<i>Agromyza albitarsis</i>	Nationally Scarce B	
<i>Agromyza alnibetulae</i>	Local	
<i>Agromyza alnivora</i>	Common	
<i>Agromyza alunulata</i>	pRDB 3	
<i>Agromyza ambigua</i>	pRDB 1	
<i>Agromyza anthracina</i>	Common	
<i>Agromyza audcenti</i>	Unknown	
<i>Agromyza bicaudata</i>	pRDB 1	
<i>Agromyza bicophaga</i>	pRDB 1	
<i>Agromyza bromi</i>	pRDB 3	
<i>Agromyza cinerascens</i>	Nationally Scarce A	
<i>Agromyza conjuncta</i>	pRDB 1	
<i>Agromyza demeijerei</i>	Nationally Scarce B	
<i>Agromyza dipsaci</i>	Nationally Scarce B	
<i>Agromyza erythrocephala</i>	pRDB 2	
<i>Agromyza felleri</i>	pRDB 1	
<i>Agromyza ferruginosa</i>	Nationally Scarce A	
<i>Agromyza filipendulae</i>	Local	
<i>Agromyza flaviceps</i>	Local	
<i>Agromyza flavipennis</i>	Nationally Scarce A	
<i>Agromyza frontella</i>	Nationally Scarce A	
<i>Agromyza graminicola</i>	pRDB 1	
<i>Agromyza hendeli</i>	Nationally Scarce A	
<i>Agromyza idaeiana</i>	Common	
<i>Agromyza igniceps</i>	pRDB 3	
<i>Agromyza intermittens</i>	pRDB 1	
<i>Agromyza johannae</i>	Nationally Scarce B	
<i>Agromyza lathyri</i>	pRDB 1	
<i>Agromyza lithospermi</i>	Nationally Scarce A	
<i>Agromyza lucida</i>	pRDB 2	
<i>Agromyza luteitarsis</i>	pRDB 1	
<i>Agromyza macedonica</i>	Unknown	
<i>Agromyza marionae</i>	pRDB 1	
<i>Agromyza mobilis</i>	Local	
<i>Agromyza myosotidis</i>	Nationally Scarce A	
<i>Agromyza nana</i>	Common	
<i>Agromyza nigrella</i>	Nationally Scarce A	
<i>Agromyza nigrescens</i>	Nationally Scarce B	

<i>Agromyza nigripes</i>	Nationally Scarce B	
<i>Agromyza nigrociliata</i>	Nationally Scarce B	
<i>Agromyza phragmitidis</i>	Nationally Scarce A	
<i>Agromyza prespana</i>	pRDB 1	
<i>Agromyza pseudoreptans</i>	Local	
<i>Agromyza pseudorufipes</i>	pRDB 1	
<i>Agromyza pulla</i>	pRDB 1	
<i>Agromyza reptans</i>	Local	
<i>Agromyza rondensis</i>	Nationally Scarce B	
<i>Agromyza rubiginosa</i>	pRDB 1	
<i>Agromyza rufipes</i>	pRDB 1	
<i>Agromyza sulfuriceps</i>	Nationally Scarce B	
<i>Agromyza varicornis</i>	Nationally Scarce A	
<i>Agromyza viciae</i>	pRDB 2	
<i>Agromyza vicifoliae</i>	Nationally Scarce B	
<i>Amauromyza chenopodivora</i>	pRDB 1	
<i>Amauromyza flavifrons</i>	Common	
<i>Amauromyza gyrans</i>	pRDB 1	
<i>Amauromyza karli</i>	Unknown	
<i>Amauromyza labiatarum</i>	Common	
<i>Amauromyza luteiceps</i>	pRDB 2	
<i>Amauromyza monfalconensis</i>	Nationally Scarce A	
<i>Amauromyza morionella</i>	Nationally Scarce B	
<i>Amauromyza verbasci</i>	Local	
<i>Aulagromyza anteposita</i>	pRDB 3	
<i>Aulagromyza buhri</i>	pRDB 1	
<i>Aulagromyza cornigera</i>	Local	
<i>Aulagromyza discrepans</i>	Nationally Scarce A	
<i>Aulagromyza fulvicornis</i>	pRDB 3	
<i>Aulagromyza hendeliana</i>	Local	
<i>Aulagromyza heringii</i>	Local	
<i>Aulagromyza lucens</i>	pRDB 1	
<i>Aulagromyza luteoscutellata</i>	Local	
<i>Aulagromyza orphanana</i>	Nationally Scarce B	
<i>Aulagromyza populi</i>	Nationally Scarce B	
<i>Aulagromyza populicola</i>	Nationally Scarce B	
<i>Aulagromyza similis</i>	pRDB 1	
<i>Aulagromyza tremulae</i>	Nationally Scarce B	
<i>Aulagromyza tridentata</i>	Nationally Scarce B	
<i>Aulagromyza trivittata</i>	pRDB 2	
<i>Calycomyza artemisiae</i>	Local	
<i>Calycomyza humeralis</i>	Nationally Scarce A	
<i>Cerodontha affinis</i>	pRDB 1	
<i>Cerodontha angulata</i>	pRDB 3	
<i>Cerodontha atra</i>	Nationally Scarce B	
<i>Cerodontha atronitens</i>	Nationally Scarce B	
<i>Cerodontha bimaculata</i>	Nationally Scarce B	
<i>Cerodontha biseta</i>	Nationally Scarce B	
<i>Cerodontha bohemani</i>	pRDB 1	
<i>Cerodontha calamagrostidis</i>	pRDB 1	

<i>Cerodontha calosoma</i>	pExtinct	
<i>Cerodontha capitata</i>	Nationally Scarce B	
<i>Cerodontha caricicola</i>	Nationally Scarce B	
<i>Cerodontha crassisetia</i>	pRDB 3	
<i>Cerodontha denticornis</i>	Common	
<i>Cerodontha eucaricis</i>	pRDB 1	
<i>Cerodontha fasciata</i>	pRDB 1	
<i>Cerodontha flavocingulata</i>	Nationally Scarce B	
<i>Cerodontha fulvipes</i>	Local	
<i>Cerodontha geniculata</i>	pRDB 3	
<i>Cerodontha hammi</i>	pRDB 2	
<i>Cerodontha hennigi</i>	pRDB 1	
<i>Cerodontha hirtae</i>	Unknown	
<i>Cerodontha imbuta</i>	pRDB 1	
<i>Cerodontha incisa</i>	Nationally Scarce B	
<i>Cerodontha inconspicua</i>	pExtinct	
<i>Cerodontha iraeos</i>	Local	
<i>Cerodontha iridis</i>	Local	
<i>Cerodontha lateralis</i>	Nationally Scarce B	
<i>Cerodontha lineella</i>	pExtinct	
<i>Cerodontha luctuosa</i>	Local	
<i>Cerodontha luzulae</i>	Nationally Scarce B	
<i>Cerodontha mellita</i>	pRDB 1	
<i>Cerodontha morosa</i>	pRDB 3	
<i>Cerodontha muscina</i>	Nationally Scarce B	
<i>Cerodontha palustris</i>	Unknown	
<i>Cerodontha phalaridis</i>	pRDB 1	
<i>Cerodontha phragmitidis</i>	Nationally Scarce A	
<i>Cerodontha phragmitophila</i>	pExtinct	
<i>Cerodontha pseuderrans</i>	pRDB 1	
<i>Cerodontha pygmaea</i>	Nationally Scarce B	
<i>Cerodontha pygmella</i>	Unknown	
<i>Cerodontha rohdendorfi</i>	pRDB 1	
<i>Cerodontha rozkosnyi</i>	Unknown	
<i>Cerodontha scirpi</i>	pRDB 1	
<i>Cerodontha scutellaris</i>	pRDB 1	
<i>Cerodontha silvatica</i>	pRDB 3	
<i>Cerodontha spinata</i>	pRDB 2	
<i>Cerodontha staryi</i>	pRDB 1	
<i>Cerodontha superciliosa</i>	pRDB 3	
<i>Cerodontha suturalis</i>	Nationally Scarce A	
<i>Cerodontha unisetiorbita</i>	Adventive	
<i>Cerodontha vinokurovi</i>	Unknown	
<i>Cerodontha venturii</i>	Nationally Scarce A	
<i>Cerodontha zuskai</i>	Unknown	
<i>Chromatomyia aprilina</i>	Common	
<i>Chromatomyia asteris</i>	Nationally Scarce A	
<i>Chromatomyia blackstoniae</i>	pRDB 1	
<i>Chromatomyia centaurii</i>	Nationally Scarce A	
<i>Chromatomyia farfarella</i>	pRDB 1	

<i>Chromatomyia fuscula</i>	pRDB 1	
<i>Chromatomyia glacialis</i>	pExtinct	
<i>Chromatomyia horticola</i>	Common	
<i>Chromatomyia isicae</i>	Unknown	
<i>Chromatomyia lonicerae</i>	Common	
<i>Chromatomyia luzulae</i>	pRDB 1	
<i>Chromatomyia milii</i>	Common	
<i>Chromatomyia nigra</i>	Common	
<i>Chromatomyia obscuriceps</i>	Unknown	
<i>Chromatomyia opacella</i>	pRDB 1	
<i>Chromatomyia periclymeni</i>	Nationally Scarce B	
<i>Chromatomyia primulae</i>	Common	
<i>Chromatomyia ramosa</i>	Local	
<i>Chromatomyia scabiosae</i>	pRDB 1	
<i>Chromatomyia scolopendri</i>	Local	
<i>Chromatomyia succisae</i>	pRDB 1	
<i>Chromatomyia syngenesiae</i>	Common	
<i>Galiomyza morio</i>	Nationally Scarce A	
<i>Galiomyza violiphaga</i>	pRDB 2	
<i>Gymnophytomyza heteroneura</i>	pRDB 2	
<i>Hexomyza cecidogena</i>	Unknown	
<i>Hexomyza sarothamni</i>	pRDB 1	
<i>Hexomyza schineri</i>	pExtinct	
<i>Hexomyza simplex</i>	pRDB 1	
<i>Hexomyza simplicoides</i>	pRDB 3	
<i>Liriomyza amoena</i>	Common	
<i>Liriomyza angulicornis</i>	Nationally Scarce A	
<i>Liriomyza artemisicola</i>	Nationally Scarce A	
<i>Liriomyza bryoniae</i>	pRDB 2	
<i>Liriomyza cannabis</i>	Adventive	
<i>Liriomyza centaureae</i>	Nationally Scarce B	
<i>Liriomyza cicerina</i>	Nationally Scarce B	
<i>Liriomyza congesta</i>	Local	
<i>Liriomyza demeijerei</i>	pRDB 2	
<i>Liriomyza equiseti</i>	pExtinct	
<i>Liriomyza erucifolii</i>	Nationally Scarce A	
<i>Liriomyza eupatoriana</i>	pRDB 1	
<i>Liriomyza eupatorii</i>	Local	
<i>Liriomyza europaea</i>	Unknown	
<i>Liriomyza flaveola</i>	Local	
<i>Liriomyza flavopicta</i>	pRDB 1	
<i>Liriomyza hampsteadensis</i>	pRDB 1	
<i>Liriomyza hieracii</i>	pRDB 1	
<i>Liriomyza huidobrensis</i>	Adventive	
<i>Liriomyza infuscata</i>	pRDB 1	
<i>Liriomyza intonsa</i>	Unknown	
<i>Liriomyza latigenis</i>	Unknown	
<i>Liriomyza latipalpis</i>	pRDB 2	
<i>Liriomyza lutea</i>	Nationally Scarce A	
<i>Liriomyza obliqua</i>	Unknown	

<i>Liriomyza occipitalis</i>	pRDB 1	
<i>Liriomyza orbona</i>	Nationally Scarce B	
<i>Liriomyza pasuum</i>	Nationally Scarce B	
<i>Liriomyza phryne</i>	Nationally Scarce A	
<i>Liriomyza pisivora</i>	Nationally Scarce A	
<i>Liriomyza polygalae</i>	pRDB 1	
<i>Liriomyza ptarmicae</i>	pRDB 3	
<i>Liriomyza puella</i>	Unknown	
<i>Liriomyza pusilla</i>	Nationally Scarce B	
<i>Liriomyza pusio</i>	Nationally Scarce A	
<i>Liriomyza richteri</i>	Nationally Scarce B	
<i>Liriomyza sativae</i>	Adventive	
<i>Liriomyza scorzonerae</i>	pExtinct	
<i>Liriomyza solivaga</i>	pExtinct	
<i>Liriomyza sonchi</i>	Nationally Scarce B	
<i>Liriomyza soror</i>	pRDB 1	
<i>Liriomyza strigata</i>	Local	
<i>Liriomyza tanacetii</i>	pRDB 1	
<i>Liriomyza taraxaci</i>	Nationally Scarce A	
<i>Liriomyza taurica</i>	Unknown	
<i>Liriomyza tragopogonis</i>	pRDB 1	
<i>Liriomyza trifolii</i>	Adventive	
<i>Liriomyza valerianae</i>	Nationally Scarce A	
<i>Liriomyza virgo</i>	pRDB 1	
<i>Liriomyza virgula</i>	Unknown	
<i>Liriomyza yasumatsui</i>	Unknown	
<i>Melanagromyza aenea</i>	Nationally Scarce A	
<i>Melanagromyza aeneoventris</i>	Nationally Scarce B	
<i>Melanagromyza albocilia</i>	pRDB 1	
<i>Melanagromyza angeliciphaga</i>	Nationally Scarce A	
<i>Melanagromyza astragali</i>	pRDB 1	
<i>Melanagromyza cunctans</i>	Nationally Scarce A	
<i>Melanagromyza dettmeri</i>	Nationally Scarce B	
<i>Melanagromyza eriolepidis</i>	pRDB 1	
<i>Melanagromyza eupatorii</i>	Nationally Scarce A	
<i>Melanagromyza fabae</i>	pRDB 1	
<i>Melanagromyza galegae</i>	Unknown	
<i>Melanagromyza lappae</i>	Nationally Scarce B	
<i>Melanagromyza limata</i>	pExtinct	
<i>Melanagromyza moatesi</i>	Unknown	
<i>Melanagromyza nibletti</i>	pExtinct	
<i>Melanagromyza oligophaga</i>	pRDB 1	
<i>Melanagromyza pubescens</i>	pRDB 1	
<i>Melanagromyza sativae</i>	pExtinct	
<i>Melanagromyza symphyti</i>	pRDB 1	
<i>Melanagromyza tripolii</i>	Nationally Scarce A	
<i>Metopomyza flavonotata</i>	Nationally Scarce B	
<i>Metopomyza junci</i>	Unknown	
<i>Metopomyza nigriorbita</i>	pRDB 1	
<i>Metopomyza nigrohumeralis</i>	Unknown	

<i>Metopomyza scutellata</i>	pRDB 1	
<i>Metopomyza xanthaspis</i>	pRDB 1	
<i>Napomyza bellidis</i>	pRDB 2	
<i>Napomyza carotae</i>	pRDB 3	
<i>Napomyza cichorii</i>	pRDB 1	
<i>Napomyza crepidicaulis</i>	Unknown	
<i>Napomyza elegans</i>	pRDB 1	
<i>Napomyza hirticornis</i>	Nationally Scarce B	
<i>Napomyza lateralis</i>	Nationally Scarce B	
<i>Napomyza nigriceps</i>	Nationally Scarce A	
<i>Napomyza merita</i>	Unknown	
<i>Napomyza scrophulariae</i>	Nationally Scarce A	
<i>Napomyza tripolii</i>	pRDB 1	
<i>Nemorimyza posticata</i>	Nationally Scarce A	
<i>Ophiomyia alliariae</i>	pRDB 1	
<i>Ophiomyia aquilegiana</i>	pRDB 2	
<i>Ophiomyia beckeri</i>	Nationally Scarce A	
<i>Ophiomyia collini</i>	pRDB 1	
<i>Ophiomyia cunctata</i>	Nationally Scarce A	
<i>Ophiomyia curvipalpis</i>	Nationally Scarce A	
<i>Ophiomyia definita</i>	pRDB 1	
<i>Ophiomyia galii</i>	pRDB 1	
<i>Ophiomyia gnaphalii</i>	pRDB 1	
<i>Ophiomyia heracleivora</i>	pExtinct	
<i>Ophiomyia heringi</i>	pRDB 2	
<i>Ophiomyia labiatarum</i>	pRDB 2	
<i>Ophiomyia longilingua</i>	Unknown	
<i>Ophiomyia maura</i>	pRDB 3	
<i>Ophiomyia melandricaulis</i>	pRDB 3	
<i>Ophiomyia melandryi</i>	pRDB 3	
<i>Ophiomyia nasuta</i>	pRDB 1	
<i>Ophiomyia ononidis</i>	pRDB 1	
<i>Ophiomyia orbiculata</i>	Nationally Scarce A	
<i>Ophiomyia penicillata</i>	pExtinct	
<i>Ophiomyia pinguis</i>	pRDB 1	
<i>Ophiomyia pulicaria</i>	Nationally Scarce B	
<i>Ophiomyia ranunculicaulis</i>	pRDB 3	
<i>Ophiomyia rostrata</i>	pRDB 1	
<i>Ophiomyia senecionina</i>	pRDB 2	
<i>Ophiomyia ungarensis</i>	Unknown	
<i>Phytobia cambii</i>	Nationally Scarce A	
<i>Phytobia carbonaria</i>	pRDB 1	
<i>Phytobia cerasiferae</i>	pExtinct	
<i>Phytobia errans</i>	pRDB 3	
<i>Phytobia mallochi</i>	pRDB 1	
<i>Phytoliriomyza alpicola</i>	pRDB 1	
<i>Phytoliriomyza arctica</i>	pRDB 1	
<i>Phytoliriomyza dorsata</i>	pRDB 2	
<i>Phytoliriomyza hilarella</i>	pRDB 3	
<i>Phytoliriomyza melampyga</i>	Common	

<i>Phytoliriomyza nigrifrons</i>	Unknown	
<i>Phytoliriomyza ornata</i>	pRDB 1	pNationally Scarce
<i>Phytoliriomyza pectoralis</i>	pRDB 1	
<i>Phytoliriomyza perpusilla</i>	pRDB 1	
<i>Phytoliriomyza pteridii</i>	pRDB 1	
<i>Phytoliriomyza scotica</i>	pExtinct	
<i>Phytoliriomyza venustula</i>	pExtinct	
<i>Phytomyza aconiti</i>	pRDB 2	
<i>Phytomyza adjuncta</i>	pRDB 1	
<i>Phytomyza affinis</i>	pRDB 1	
<i>Phytomyza agromyzina</i>	Common	
<i>Phytomyza albiceps</i>	pRDB 2	
<i>Phytomyza albipennis</i>	Nationally Scarce B	
<i>Phytomyza alpina</i>	pRDB 1	
<i>Phytomyza anderi</i>	Doubtfully British	
<i>Phytomyza anemones</i>	pRDB 1	
<i>Phytomyza angelicae</i>	Local	
<i>Phytomyza angelicastris</i>	Local	
<i>Phytomyza antennariae</i>	pRDB 2	
<i>Phytomyza aquilegiae</i>	Local	
<i>Phytomyza arnicae</i>	pRDB 1	
<i>Phytomyza artemisivora</i>	Nationally Scarce B	
<i>Phytomyza astrantiae</i>	Local	
<i>Phytomyza autumnalis</i>	Nationally Scarce A	
<i>Phytomyza bipunctata</i>	Nationally Scarce A	
<i>Phytomyza brischkei</i>	pExtinct	
<i>Phytomyza brunripes</i>	Nationally Scarce A	
<i>Phytomyza buhriella</i>	pExtinct	
<i>Phytomyza calthivora</i>	pRDB 1	
<i>Phytomyza calthophila</i>	Nationally Scarce A	
<i>Phytomyza campanulae</i>	pRDB 3	
<i>Phytomyza cecidonomia</i>	Nationally Scarce A	
<i>Phytomyza chaerophylli</i>	Common	
<i>Phytomyza cineracea</i>	pRDB 1	
<i>Phytomyza cinerea</i>	pRDB 1	
<i>Phytomyza cirsii</i>	Nationally Scarce B	
<i>Phytomyza clematidis</i>	pRDB 2	
<i>Phytomyza conii</i>	pRDB 1	
<i>Phytomyza continua</i>	Nationally Scarce B	
<i>Phytomyza conyzae</i>	Local	
<i>Phytomyza corvimontana</i>	pExtinct	
<i>Phytomyza crassiseta</i>	Local	
<i>Phytomyza cytisi</i>	Local	
<i>Phytomyza dasyops</i>	pRDB 1	
<i>Phytomyza diversicornis</i>	pRDB 2	
<i>Phytomyza enigmoides</i>	pRDB 1	
<i>Phytomyza erigerophila</i>	pRDB 1	
<i>Phytomyza eupatorii</i>	Nationally Scarce B	
<i>Phytomyza evanescens</i>	Nationally Scarce A	
<i>Phytomyza fallaciosa</i>	Nationally Scarce B	

<i>Phytomyza ferina</i>	pExtinct	
<i>Phytomyza flavicornis</i>	Local	
<i>Phytomyza flavofemorata</i>	pExtinct	
<i>Phytomyza fulgens</i>	Nationally Scarce A	
<i>Phytomyza glechomae</i>	Local	
<i>Phytomyza griffithsi</i>	pRDB 1	
<i>Phytomyza gymnostoma</i>	Local	
<i>Phytomyza heckfordi</i>	pRDB 1	
<i>Phytomyza hellebori</i>	Local	
<i>Phytomyza hendeli</i>	pRDB 2	
<i>Phytomyza heracleana</i>	Local	
<i>Phytomyza heringiana</i>	pRDB 1	
<i>Phytomyza heterophylli</i>	pRDB 1	
<i>Phytomyza ilicis</i>	Common	
<i>Phytomyza isais</i>	pRDB 2	
<i>Phytomyza kaltenbachi</i>	Doubtfully British	
<i>Phytomyza krygeri</i>	Nationally Scarce B	
<i>Phytomyza lappae</i>	Common	
<i>Phytomyza leucanthemi</i>	Nationally Scarce B	
<i>Phytomyza marginella</i>	Nationally Scarce B	
<i>Phytomyza medicaginis</i>	pRDB 1	
<i>Phytomyza melana</i>	pRDB 1	
<i>Phytomyza minuscula</i>	Common	
<i>Phytomyza murina</i>	pExtinct	
<i>Phytomyza myosotica</i>	pRDB 1	
<i>Phytomyza nigrifemur</i>	pRDB 1	
<i>Phytomyza nigripennis</i>	Nationally Scarce A	
<i>Phytomyza nigrیتella</i>	pRDB 1	
<i>Phytomyza nigrیتula</i>	pRDB 2	
<i>Phytomyza notata</i>	pRDB 3	
<i>Phytomyza obscura</i>	pRDB 1	
<i>Phytomyza obscurella</i>	Nationally Scarce B	
<i>Phytomyza origani</i>	pRDB 3	
<i>Phytomyza orobanchia</i>	pRDB 2	pNationally Scarce
<i>Phytomyza paraciliata</i>	pRDB 2	
<i>Phytomyza pastinacae</i>	Nationally Scarce A	
<i>Phytomyza pauliloewii</i>	pRDB 1	
<i>Phytomyza pedicularifolii</i>	pRDB 1	
<i>Phytomyza penicilla</i>	Unknown	
<i>Phytomyza petoei</i>	Nationally Scarce A	
<i>Phytomyza phillyreae</i>	Unknown	
<i>Phytomyza pimpinellae</i>	pRDB 2	
<i>Phytomyza plantaginis</i>	Local	
<i>Phytomyza pullula</i>	pRDB 2	
<i>Phytomyza ranunculella</i>	Unknown	
<i>Phytomyza ranunculi</i>	Common	
<i>Phytomyza ranunculicola</i>	pRDB 2	
<i>Phytomyza ranunculivora</i>	Local	
<i>Phytomyza rhabdophora</i>	pExtinct	
<i>Phytomyza rhodiolae</i>	pRDB 1	

<i>Phytomyza robustella</i>	pExtinct	
<i>Phytomyza rostrata</i>	pRDB 1	
<i>Phytomyza rufescens</i>	pRDB 1	
<i>Phytomyza rufipes</i>	Nationally Scarce A	
<i>Phytomyza rydeni</i>	pRDB 1	
<i>Phytomyza schlicki</i>	pRDB 1	
<i>Phytomyza scotina</i>	Unknown	
<i>Phytomyza sedi</i>	pRDB 1	
<i>Phytomyza sedicola</i>	pRDB 1	
<i>Phytomyza silai</i>	pRDB 1	
<i>Phytomyza sitchensis</i>	pRDB 1	
<i>Phytomyza soenderupi</i>	pRDB 2	
<i>Phytomyza solidaginis</i>	pRDB 3	
<i>Phytomyza sphondyliivora</i>	Nationally Scarce B	
<i>Phytomyza spinaciae</i>	Nationally Scarce B	
<i>Phytomyza spoliata</i>	pRDB 1	
<i>Phytomyza spondylii</i>	Nationally Scarce B	
<i>Phytomyza stolonigena</i>	pRDB 3	
<i>Phytomyza tanaceti</i>	pRDB 3	
<i>Phytomyza tenella</i>	pRDB 2	
<i>Phytomyza tetrasticha</i>	Nationally Scarce B	
<i>Phytomyza thysselini</i>	pRDB 1	
<i>Phytomyza trollii</i>	pRDB 1	
<i>Phytomyza trolliivora</i>	pRDB 1	
<i>Phytomyza trolliophila</i>	pRDB 1	
<i>Phytomyza tussilaginis</i>	Local	
<i>Phytomyza varipes</i>	Nationally Scarce A	
<i>Phytomyza virgaureae</i>	pRDB 2	
<i>Phytomyza vitalbae</i>	Local	
<i>Phytomyza wahlgreni</i>	Nationally Scarce B	
<i>Pseudonapomyza atra</i>	Nationally Scarce B	
<i>Pseudonapomyza europaea</i>	pRDB 1	
<i>Pseudonapomyza lacteipennis</i>	pRDB 1	

Acknowledgements

I would like to thank the hundreds of individuals who have submitted records to the National Agromyzidae Recording Scheme during the past five years, whose observations have vastly improved our knowledge and understanding of the Agromyzidae.

Thanks also to the many local ecological record centres who kindly provided their datasets for inclusion in the schemes database and to Rob Edmunds and Tony Davis for their feedback on this status review.

The works of Kenneth Spencer (1916-2002), who spent 40 years collecting and studying Agromyzidae, remain as the foundation of our understanding for most of the species on the British list and anyone with an interest in this family of flies, are wholly indebted to him.

References

- Crowther, R., Devenish, E., Wing, P., Allan, L., et al. 2019. Dataset: British and Irish Agromyzidae (Diptera) Collection. Resource: "British and Irish Agromyzidae (Diptera)" specimens. Natural History Museum Data Portal.
- Falk, S. J., Ismay, J. W. & Chandler, P. J. 2016. *A Provisional Assessment of the Status of Acalyptatae flies in the UK*. Natural England Commissioned Reports, Number 217.
- Shirt, D. B. (Ed.). 1987. *British Red Data Books: 2 Insects*. Peterborough, Nature Conservancy Council.
- Falk, S. J. 1991. *A review of the scarce and threatened flies of Great Britain (Part 1)*. Research and survey in nature conservation No. 39. Peterborough, Nature Conservancy Council.